



Wollongbar Public School

Simpson Ave, Wollongbar 2477

Ph: 6628 1302 Fax: 6628 1976

Email: wollongbar-p.school@det.nsw.edu.au

Website: <https://wollongbar-p.schools.nsw.gov.au/>

Principal: Jennifer Thomas

Thursday 20th February 2020

Term 1, Week 4

Volume 3



Education
Public Schools

Calendar

Week 4

21/02 Assembly 5/6J
11:30am

Week 5

28/02 Assembly 5/6M
11:30am

Week 6

04/03 P&C Mtg
7:00pm
06/03 School Captain
Induction Assembly
11:30am

Week 7

11/03 Final Camp Payment
Due for Stg 3
13/03 SRC Induction
Assembly
11:30am

Week 8

20/03 House Captains
Induction Assembly
& Ceremony
11:30am
21/03 P&C A Fair to
Remember Fete

Week 9

25/03 The Rivers Road
Show 9:30-11:30
27/03 Assembly 5/6KB
11:30am

Week 10

01/04 Stg 2 Camp Begins
P&C Mtg
7:00pm
03/04 Assembly 4A
11:30am

For more events on our
Calendar, please go to:
<http://www.wollongbar-p.schools.nsw.edu.au/>

Principal Report

We need your help at our Working Bee.

This year we are taking a strong focus on improving the quality of our bookwork. To encourage a sense of pride and ownership, books will be covered with student artwork. Our classes have created some fantastic covers, ready to be put onto our books. This is where we need your help!



We would like to run a series of parent & carer working bees, to help us cover our books. Many hands make light work. Come for a short time or a long time, all help is greatly appreciated. A great opportunity to meet other parents in the school.

Please come to the staffroom at the time below.

When: 9.15 – 11.00 am
Wednesday 26th, Thursday 27th & Friday 28th of February
Where: In the staffroom (Morning Tea provided)
What: Covering student books

Safety Around Children's Crossings

Children's crossings are usually part-time crossings that operate before and after school hours, or at other times that may be approved by local councils. Aside from these times, the area is not a pedestrian crossing. When in use, red flags displaying the words CHILDREN CROSSING are used. **Drivers must slow down and halt before the stop line when a pedestrian is on the crossing or waiting to cross – and remain stopped until all pedestrians leave the crossing.**



Did you know that our teachers volunteer to do the Crossing Duty each afternoon to keep the children as safe as possible? Did you know that we have two teachers on Crossing Duty each afternoon to keep each other as safe as possible from drivers who do not follow road rules? Did you know that we have been identifying with both *Ballina Council* and *NSW Roads and Maritime* for a number of years now that this crossing poses safety issues?

Give your child a Breakfast Boost!

A recent report from the Australian Bureau of Statistics found that about 1 in 7 Aussie children are skipping breakfast, although some research suggests these rates may be even higher.

Eating breakfast is very important for school aged children, as students that regularly eat breakfast have:

- Improved classroom behaviour
- Are better able to socialise
- Improved test results (Maths, English and Science in particular)
- Better memory and concentration (reduces the "brain fuzz" that many people that skip breakfast feel)

Breakfast gives children an opportunity to refuel and eat what they need for the day ahead. When it comes to breakfast foods some are better than others, especially those that take us longer to digest (low glycaemic index (GI) foods) as they improve concentration for a longer period of time. Some great ideas to base breakfasts around include grainy breads, wholegrain cereals, fruit and milk or yoghurt. You can even try some of these recipes – they store or freeze well and can be eaten on the run.

Hit [Control](https://nswlhd.health.nsw.gov.au/health-promotion/healthy-eating-recipes) and then [Click](https://nswlhd.health.nsw.gov.au/health-promotion/healthy-eating-recipes) on the links below to access some recipes from <https://nswlhd.health.nsw.gov.au/health-promotion/healthy-eating-recipes>. There are a whole lot more to choose from on the site!

[Breakfast Boats](#)

[Muesli Breakfast Muffins](#)

[Savoury Muesli](#) [Savoury Breakfast Muffins](#)



Included with this newsletter is a copy of our updated *WPS Visitor and Volunteer Procedures*. The Procedure refers to the *School Community Charter*, which is also included with this newsletter.

We love all our volunteers and the *Visitor and Volunteer Procedures* outline how to volunteer in our school and what our expectations are. Volunteers and staff are all bound by the same *NSW Department of Education Code of Conduct* and charter so that parents and carers can have certainty around the care shown to their children.

Jennifer
Principal

2020 Planner

Term 1	Monday	Tuesday	Wednesday	Thursday	Friday
4	17 Feb. Dance Fever Program	18 Feb.	19 Feb. Parent/Carer Info Night	20 Feb.	21 Feb. 5/6J Assembly
5	24 Feb. Dance Fever Program	25 Feb. Student Banking Scripture	26 Feb.	27 Feb.	28 Feb. 5/6M Assembly
6	2 Mar. Dance Fever Program	3 Mar. Student Banking Scripture Yrs 5/6 Debating @ APS	4 Mar. 7pm P&C Mtg	5 Mar.	6 Mar. Captains Induction Assembly
7	9 Mar. Dance Fever Program	10 Mar. Student Banking Scripture	11 Mar. Final Camp Payment Due for Stg 3	12 Mar.	13 Mar. SRC Induction Assembly
8	16 Mar. Dance Fever Program	17 Mar. Student Banking Scripture	18 Mar.	19 Mar.	20 Mar. House Captains Induction Assembly
					Saturday 21 Mar. P&C Fete
9	23 Mar. Dance Fever Program	24 Mar. Student Banking Scripture	25 Mar. 9:30-11:30 Rivers Road Show	26 Mar.	27 Mar. 5/6KB Assembly
10	30 Mar. Dance Fever Program	31 Mar. Student Banking Scripture	1 April. Stg 2 Camp 7pm P&C Mtg	2 April. Stg 2 Camp	3 April. Stg 2 Camp 4A Assembly
11	6 April. Dance Fever Program	7 April. Student Banking Scripture	8 April.	9 April. Last day of Term 1	10 April. Good Friday Public Holiday
Term 2	Monday	Tuesday	Wednesday	Thursday	Friday
1	27 April. School Development Day – Staff Only	28 April. Students commence Student Banking Scripture	29 April.	30 April.	1 May. 4M Assembly
2	4 May. Stg 3 Camp	5 May. Stg 3 Camp Student Banking Scripture	6 May. Stg 3 Camp 7.00 P&C Mtg	7 May. Stg 3 Camp	8 May. Stg 3 Camp 3K Assembly
3	11 May.	12 May. Student Banking Scripture	13 May.	14 May.	15 May. Grandparents Day Assembly
4	18 May.	19 May. Student Banking Scripture	20 May.	21 May.	22 May. 2S Assembly

UPCOMING EVENTS

Who	Event	Due Date	Cost
Years 3 & 4 - 2020	Coffs Coast Adventure Centre 2020	Wednesday 12 th of February	\$60 / Student
Years 5 & 6 - 2020	Great Aussie Bush Camp 2020	Wednesday 12 th of February Wednesday 11 th of March	\$100 / Student \$100 / Student
Whole School	Dance Fever 2020	Friday 7 th of February Friday 31 st of January	Kindergarten 2020 / \$22.50 Years 1-6 2020 / \$25

Payment Options: (Payments can be made in instalments)

Online with credit card: Visit the **school website** and click on the '**Make A Payment**' tab to pay online and return permission notes to the front office the next day.

Cash & Cheque: paid to the front office with the permission notes.

Eftpos by 1pm: paid to the front office **before** 1pm with permission notes.



Merit Awards

A consistent incremental reward system operates throughout the school. Certificates are presented throughout the week and at assemblies for Gold and Platinum Awards. Gold and Platinum Awards are reported in the weekly newsletter the day before the student receives their award at assembly.

All merit awards are processed by the Office each week. Awards can be handed into the Office when students arrive at school. If Merit Awards are handed in by 9.15am each **Monday morning** they will be processed for the Friday assembly of that specific week.

Step 1:

When students have achieved **5 Blue** Awards, they take them to the Office to be processed to receive 1 Gold Award at the next assembly.



x5

Step 2:

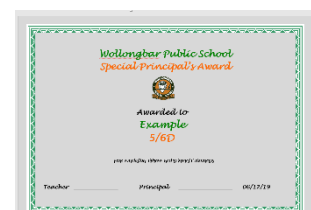
When students have achieved **3 Gold** Awards, they take them to the Office to be processed to receive 1 Platinum Award at the next assembly.



x3

Step 3:

Student's receive a **Platinum Award** & Pencil at the next assembly.



In addition, "**House Points**" are used for a variety of positive behaviours. These are tallied each week, with the winning house announced at weekly assemblies.

School Communication



The School App: Have you downloaded our new school app, Skoolbag on your phone? It is available for free via the App store or Play Store. The Skoolbag App is used to send instant notifications to parent's phones about upcoming events or cancellations, and also contains other school information. Search for the Skoolbag app. Sign up using your email address and then go into the app to add Wollongbar Public School as one of your registered schools.

✓ **Have your details changed?**

✓ **Has your child's health information changed?**

If **YES** please complete the following form and send in to the front office so we can keep your child's records up to date.

Student's Name: _____ Class: _____

Parents/Carer 1 Name: _____ Mobile _____

Parents/Carer 2 Name: _____ Mobile _____

Address: _____ Home No. _____ Work No. _____

Emergency Contact 1 Name _____ Phone No _____

Emergency Contact 2 Name _____ Phone No _____

Medical Details/Conditions _____

Email Address: _____ Signature: _____ Date _____

Megan
School Administrative Officer

Wollongbar P&C

A Fair To Remember

Wollongbar P&C FETE

**Saturday 21st March
9 am – 2 pm**



The P&C are busy getting everything ready for the event of the year!!

Make sure you save the date as you don't want to miss it!

TICKETS ON SALE NOW!!



Want a stall at the Fete?

Businesses can book a fete stall for \$30. Spots are limited.

Contact Anna 0410 594 676 to reserve your stall.

WE NEED YOUR HELP!



Can you help at the Fete?

Please contact Anna if you are able to help out on the day of the fete.



Don't leave your tickets to the last minute! **Get your cheap tickets NOW!!**

Purchase your ride pass for **\$30** and save **\$5**. (Passes are **\$35** on the day). An All-Day ride pass will provide unlimited entry to:

- **The Rock Wall**
- **Wild West Jumping Castle**
- **Extreme Ninja Warrior Obstacle Course**
- **Teacups Ride**
- **Chair-o-plane**
- **Extreme Fun-run slide**
- **Laser skirmish**

A Fair to Remember will be here before you know it!

To purchase your Pre-paid ride passes for \$30 (\$35 on the day) fill out the below form or online <https://tinyurl.com/wollPC/fete> and drop them into the Office. The Office will not be issuing the ride pass and the P&C will send you more information once we have processed your pass.

PLEASE NOTE: EFTPOS AND CREDIT CARD PAYMENTS ARE NOT AVAILABLE.

To purchase your ride passes, please complete the attached form below and return to the office in a clearly marked envelope with the correct change. Many thanks and see you at the Fair, March 21st. Tickets will be on sale until 17th March 2020. [Please allow 3-5 days for receipt of ride ticket purchase.](#)

✂-----

[A Fair to Remember Ride Pass](#)

Child's name _____ Age _____ Class _____

Contact name and number _____ email (optional) _____

Adult available to volunteer at the fete: (circle) **Yes** **No**

Number of ride passes (\$30 each) _____

Amount enclosed \$ _____



Waiver: In consideration of your acceptance of this entry, I hereby for myself, my executors and administrators waive any and all rights and claims for damages I may have against Wollongbar P&C, its respective representatives and successors and all sponsors, and will hold them harmless from any injury suffered in this event. Also, none of the above is responsible for the loss of neither personal items nor any other form of aggravation in connection with this event. I have been warned that all ride pass holders must be in good health to participate in the event. Selecting the adjacent checkbox indicates that you have read and agree to the full waiver located here: <https://sites.google.com/view/wollongbarpcfundraising/fete/waiver>

Tombola Jars & Beautiful Baskets

Your children will be asking you to get tombola jars and baskets ready for our stalls at the fete. Classes who bring in the most jars or baskets will win a movie and popcorn courtesy of the P&C.

So, how do you make a Tombola Jar?

Take a clean empty jar and fill it with lollies/craft items/toys/treats that children would like. Send the jars to school with your kids.

We'll be sending supplies home soon to make the beautiful baskets.

At the fete, we sell numbered tickets and participants win the tombola jar / beautiful basket with the matching number.

Second-hand books and toy stall

We are looking for good condition second-hand books and toys for a stall at the fete. If you have any unwanted items books or toys in working order, please drop them off at the office.



Passionfruit and Limes

Do you have an abundance of Passionfruit or limes?

We are adding a twist to the Lemonade stall this year and need some Passionfruit and Limes.

If you have any that you can spare please drop them into the office or contact Anna

0410 594 676 and we can arrange to pick them up.



Keep in touch

Although this newsletter is the official communication channel for the P&C committee, you might also want to like our Facebook page as we strive to post regular updates about things happening at and around the school:

<https://www.facebook.com/wollongbarPC>

Find us on 

P&C Calendar

Thank you to everyone who attended last night's first P&C meeting. It was great to see familiar faces and some new ones too!

Our next meeting is on Wednesday 4 March and will include the AGM. There will be executive positions vacant for those who might be interested in volunteering, check back soon for more info or get in touch with one of the current P&C members.

<i>What's happening?</i>	<i>When?</i>	<i>Where?</i>
Fundraising Meeting	4 March, 6 pm	Tavern
P&C AGM and General Meeting	4 March, 7 pm	Staff Room
A Fair to Remember	21 March	WPS

You can reach the P&C team via wollongbarPC@hotmail.com, <https://www.facebook.com/wollongbarPC> or

Anna (President) on 0410.594.676

Step in time ... Terrific Tap

never need a reason,
never need a rhyme,
step in time,
just step in time



Tel : 0411 306 430
www.balletcoaching.com



Wollongbar- Alstonville Junior Rugby Sign on and information day 2020

Thursday 27th February
Thursday 5th March

4.30pm to 6pm

Free BBQ

Come along for assistance with sign on.

We will provide a game of touch footy
and some small sided skill based games for the kids!

Alstonville Hockey Come & Try/ Sign On/



Pre season Training Evenings

All Ages Welcome 4 years +

Tuesday 11th Feb 2020- 4:30-5:30pm

Tuesday 18th Feb 2020- 6:00-7:00pm

Tuesday 25th Feb 2020- 4:30-5:50pm

Tuesday 3rd March 2020- 5:00-6:00pm



Follow us on facebook "Alstonville Hockey Club"
or at
<https://www.revolutionise.com.au/ahc/>



THE RIVERS
SECONDARY COLLEGE
The heart of secondary education for Lismore

INFORMATION NIGHTS
For prospective students Year 7 2021
A GREAT WORLD OF OPPORTUNITIES AT THE RIVERS

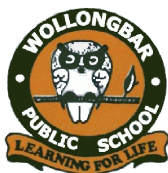
*By sending your child to a campus of the Rivers Secondary College
You have chosen to provide them with the very best available secondary education.*

The Rivers Secondary College provides excellence in education by providing quality, innovative curriculum and student leadership opportunities, inspired teaching and learning as well as successful transition programs into workplace and tertiary education settings. Each campus works collaboratively with our local Lismore community to deliver a broad and inclusive educational experience and provide all students the opportunity to achieve the highest quality learning outcomes in a safe and supportive environment.

Kadina High Campus
INFORMATION NIGHT
Wednesday 4th March
5:00pm-6:00pm
Kadina St, Goonellabah
Phone: 02 6624 3133

Richmond River
High Campus
INFORMATION NIGHT
Thursday 5th March
5:00pm-6:30pm
Lake St, North Lismore
Phone: 02 6621 3456

Lismore High Campus
INFORMATION NIGHT
Tuesday 3rd March
5:00pm-6:00pm
Dalley St, East Lismore
Phone: 02 6621 5185



Wollongbar Public School

P.O Box 3455 Wollongbar NSW 2477
Phone (02) 6628 1302 Fax (02) 6628 1976
Email: Wollongbar-p.school@det.nsw.edu.au
Principal: Jennifer Thomas



Education
Public Schools

Wollongbar Public School Visitor and Volunteer Procedures

Volunteers are a vital part of our school, adding their talents and skills to our children's learning environment. Our school culture is enriched and the value of education reinforced by our volunteers' participation in the broader school community. The aim of this procedure is to establish a common understanding of the responsibilities and standards of behaviour expected of all visitors and volunteers at Wollongbar Public School.

The conduct and manners of visitors and volunteers should at all times be acceptable and an appropriate model for students. The **School Community Charter** outlines the responsibilities of parents, carers, educators and school staff to ensure our learning environments are collaborative, supportive and cohesive.

All NSW Department of Education employees are bound by a Code of Conduct. Volunteers are bound by the same Code of Conduct as NSW Department of Education employees. This includes adhering to the values that underpin our work. These values include **fairness, respect, integrity and responsibility**. We demonstrate these values by being:

- consistently honest, trustworthy and accountable
- being courteous when dealing with others
- being committed to social justice by opposing prejudice, injustice and dishonesty
- avoiding discrimination, for example on grounds such as gender, race, religion and culture
- and promoting dignity and respect by avoiding behaviour which is, or might reasonably be perceived as, harassing, bullying or intimidating.

Parents, Carers and other volunteers assisting with activities do so on the understanding that:

- Teachers are in a position of authority and are therefore responsible for the programs operating within the classroom and/or school and on excursions.
- The teacher in charge has ultimate responsibility for the safety, welfare and care of the students.
- Volunteers accept joint responsibility, within the framework of *NSW Department of Education* guidelines and procedures, for children under their care for the duration of the time at school, on excursions or travelling to/from a school sanctioned event. For example, where volunteers drive students to/from an event, the students remain primarily under the duty of care of the teacher, with the volunteer accepting joint responsibility. Travel should be directly to the venue from school and directly back to school at the end of the event.
- Volunteers are to refrain from smoking in the presence or sight of students – the school is a government non-smoking area.
- Volunteers should not consume or have consumed alcohol prior to working with children.
- Volunteers are to co-operate with teachers in charge to ensure safety and welfare of students and compliance with *NSW Department of Education* guidelines and procedures.
- Volunteers must sign themselves in and out in the Attendance Folder at the Wollongbar Public School Office when participating in school activities.
- Volunteers should wear the Wollongbar Public School's volunteer badge as identification whilst assisting with students.
- Under the Child Protection Act of 1997 it may be necessary for the school to have volunteers who assist students undergo a Criminal Record check.

Confidentiality is of prime concern. Parents, carers, volunteers and visitors are not to discuss any information they obtain at school with anybody other than the classroom teacher or the Principal.

The Principal may exclude from any or all Wollongbar Public School volunteer programs and events any parent, carer, volunteer worker or visitor who fails to fulfil the above requirements.

Before assisting in day-to-day activities at Wollongbar Public School, parents, carers and close relatives who volunteer must first complete and provide to the Office:

Appendix 5 – Declaration for volunteers and non-child related contractors. This includes providing 100 points of ID. *Appendix 5* must be completed by any volunteers who are exempt under the ***Child Protection (Working with Children) Regulation 2013*** from having to hold a ***Working with Children Check***.

A copy of ***Appendix 5*** is available from the Office and our website.

Jennifer Thomas
Principal

School Community Charter



Collaborative. Respectful. Communication.

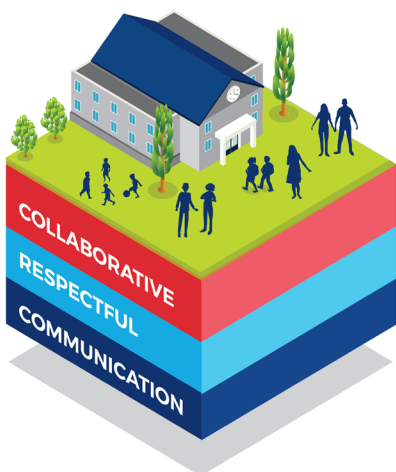
The following School Community Charter outlines the responsibilities of parents, carers, educators and school staff in NSW public schools to ensure our learning environments are collaborative, supportive and cohesive.

What our schools provide

NSW public schools work to create positive environments for students, staff and the entire school community that support student learning. We strive to ensure that every student is known, valued and cared for.

The best education happens when parents and schools work together.

The School Community Charter aligns with the NSW Department of Education Strategic Plan 2018 – 2022.



Positive environments

It is important that our NSW public schools are positive environments and that parents and carers are kept informed of students' progress and school announcements.

Parents and carers can expect:

- To be welcomed into our schools to work in partnership to promote student learning.
- Communication from school staff will be timely, polite and informative.
- Professional relationships with school staff are based on transparency, honesty and mutual respect.
- To be treated fairly. Tolerance and understanding are promoted as we respect diversity.

We treat each other with **respect**

We **prioritise** the wellbeing of all students and staff

Unsafe behaviour is not acceptable in our schools

We work **together** with the school

Ensuring respectful learning environments for all members of NSW Public Schools communities.



We create
collaborative
learning
environments

We
all play
our part

We work
in partnership
to promote
student
learning

Communicating with our schools

Our staff will find a time to talk to you when they can give you their full attention. Please remember that while our staff are in class or dealing with other matters, they may not be available to answer your questions immediately.

Our schools and communities will make sure that written communication is appropriate, fair and easy to read. We encourage you to use email and social media appropriately to connect with your school and stay up-to-date with up-coming events in the school community.

Our guide for parents, carers and students provides useful information about the complaints process:

education.nsw.gov.au/about-us/rights-and-accountability/complaints-compliments-and-suggestions/guide-for-parents-carers-and-students

Respectful communication is a right

In all workplaces people have the right to feel respected. Unacceptable and offensive behaviour has no place in our school communities.

To ensure the wellbeing of students, staff and the community in our schools, steps will be taken to address unacceptable behaviour. This may include restricting contact with the school community or, in more serious cases, referral to NSW Police.

Unacceptable behaviour may include but is not limited to:

- Aggressive or intimidating actions, such as violence, threatening gestures or physical proximity.
- Aggressive or intimidating language, including the use of obscenities, making sexist, racist or derogatory comments or using a rude tone.
- Treating members of the school community differently due to aspects such as their religion or disability.
- Inappropriate and time wasting communication.



Collaborative.
Respectful.
Communication.

School Community Charter

education.nsw.gov.au

NO STOPPING



Fine exceeds \$330 and attracts a penalty of two demerit points.

What does it mean? You cannot stop in this area for any reason.

Why is it there? To keep sight lines clear for drivers and children so both have more time to avoid accidents.

Stopping on a continuous YELLOW LINE will also attract a \$257 fine.

A driver must not stop at the side of a road marked with a continuous yellow edge line.

It means the same as the No Stopping sign.



picking up your children after school – have a plan

Plan with your child how you will collect them;

- **When and where will you be after school?**
- **Where should your child wait?**

Make sure they know not to try and get into your vehicle while it is still in traffic, even if you are stopped, they should wait until you have parked.

Your school may have some arrangements in place to help you collect your children.



no apologies, no excuses

When it comes to child safety, Ballina Shire Council makes no apologies for issuing infringement notices to drivers who break the law in and around school zones.

Illegal parking in school zones puts children at risk and endangers lives. Parking offences in school zones carry heavy fines and loss of demerit points.

If you experience a problem with illegal or dangerous parking at your school, contact

Ballina Shire Council
PO Box 450
Ballina NSW 2478
Phone 1300 864 444

Email council@ballina.nsw.gov.au



safe parking in school zones in ballina shire



your child is worth the extra time it takes



v. Feb 2019

ballina.nsw.gov.au

ballina.nsw.gov.au

safe parking in school zones

As a community we need to ensure that children have safe passage to and from school. To improve road safety around schools, we need your assistance to understand the parking restrictions around schools and teach our children to be safe around traffic.

Always supervise a child and hold their hand when crossing the road.

Schools are areas where there is a lot of interaction between cars and pedestrians; including children. Children are small, hard to see, behave unpredictably and are extremely vulnerable. Their lack of road experience means it is difficult for them to judge dangerous situations.

Boys are twice as likely to be involved in child pedestrian casualties as girls and children aged 10 to 14 years have the highest rate of child pedestrian casualties (Roads and Maritime Services). You need to take extra care when driving and parking in and around school zones, even when you think there are no children around.

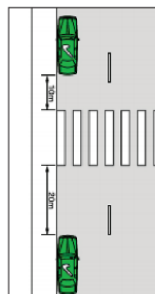
important road rules in school zones

PEDESTRIAN CROSSINGS

Fine exceeds \$439 and attracts a penalty of two demerit points.

What is the rule? You must not stop within 20 metres before a pedestrian crossing or 10 metres after a pedestrian crossing unless there is a control sign permitting parking.

Why? To ensure that pedestrians can have a clear view of approaching vehicles and drivers can see pedestrians who are about to cross the road.

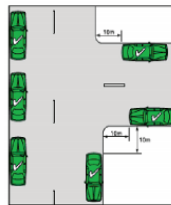


INTERSECTIONS

Fine exceeds \$439 and attracts a penalty of two demerit points.

What is the rule? You must not stop within 10 metres of an intersection.

Why? To ensure that there is a clear view of children crossing the road at the intersection.



DOUBLE PARKING

Fine exceeds \$330 and attracts a penalty of two demerit points.

What is the rule? You may not stop on the road adjacent to another vehicle at any time even to drop off or pick up passengers.

Why? Double parking forces other cars to go around you causing traffic congestion and reduces the view of drivers and children crossing the road.



important signs around schools

BUS ZONE

Fine exceeds \$330 and attracts a penalty of two demerit points.



What does it mean? You must not stop or park in a bus zone unless you are driving a bus.

Why? To provide a safe place for large buses to set down and pick up passengers. Cars parking in bus zones put lives at risk by forcing buses out of "their" safety zone.

NO PARKING

Fine exceeds \$183 and attracts a penalty of two demerit points.



What does it mean? You can stop in a NO PARKING zone for a maximum of two minutes to drop off and pick up passengers. The driver must stay within three metres of the vehicle at all times.

Why? To provide a safe place for older children to be set down and picked up without endangering other children.

NO STOPPING ON PATH/NATURE STRIP

Fine exceeds \$330 and attracts a penalty of two demerit points.

What does this mean? You cannot stop in this area for any reason.

Why? To keep sight lines clear for drivers and pedestrians.

