



Wollongbar Public School

Simpson Ave, Wollongbar 2477

Ph: 6628 1302 Fax: 6628 1976

Email: wollongbar-p.school@det.nsw.edu.au

Website: <https://wollongbar-p.schools.nsw.gov.au/>

Principal: Jennifer Thomas

Thursday 21st February 2019

Term 1, Week 4

Volume 3



Education
Public Schools

Calendar

Week 4

22/02 Assembly 5/6H
11.30am

Week 5

25/02 Dance Program K-6

26/02 Student Banking

01/03 Assembly –
Captains Induction
11.30am

Week 6

04/03 Dance Program K-6

05/03 Student Banking

08/03 Assembly – House
Captains Induction
11.30am

Week 7

11/03 Dance Program K-6

15/03 Assembly – SRC
Induction
11.30am

Week 8

18/03 Dance Program K-6

20/03 Final Stage 3 Camp
Payment Due

22/03 Assembly – 4C
11.30am

23/03 P&C Fete
9.00am-2.00pm

23/03 NSW State General
Election

Professional Learning

PLSPs/SLSO

For more events on our
Calendar, please go to:
<http://www.wollongbar-p.schools.nsw.edu.au/>

Principal's Report

Visitor and Volunteer Procedures

Volunteers are an important and welcome part of our school life. Please find following/attached/in your child's bag a copy of our Visitors and Volunteers Procedures.

Parent Information Night

It was great to see so many families at our Parent Information Night last night. If you were unable to attend, please check in your child's bag for a copy of the information note that was distributed on the night.

Crossing Safety

The school and P&C have been working hard together over the last 3 years to improve the safety of our road crossing. During the week NSW Roads & Maritimes services sent out experts to look at both the physical set out of our school and its crossing as well as the behaviour of people moving around our setting. Unfortunately at home time while the visitors watched, numerous families chose to cross the road away from the crossing, and even more alarmingly, crossed in front of parked buses where visibility is minimal. **The team from Roads & Maritime expressed frustration that it is hard to construct an argument for improving the crossing when people are not bothering to use the existing crossing anyway.**



Please make sure that you cross the road at the crossing (marked on the map). We appreciate that this may mean having to walk further to get to your car but this will help you with your 10,000 steps a day, and clearly child safety is far more important when it comes to our adult decision making.

Evacuation Procedures

Workplace Health and Safety policies require us to carry out regular practices of evacuation and lock down procedures at school. We will be familiarising ourselves with our alarms and evacuation routes in the next couple of weeks. Please remember that if you are onsite for any reason during our drills, it is important that you follow a staff member's instructions.

Toys at School

Many students find bringing a toy or two to school helps them engage with the playground environment. It is important to remember however, that any personal items that children bring to school are brought at their own risk. For this reason, it is important not to bring large numbers of toys or items that are precious. Students are not permitted to swap items at school, eg Pokemon/Soccer cards.

Thank you

We would like to thank the terrific teams of volunteers who have come this week to help us with book covering.

Tomorrow is our final 'Working Bee' morning in the staffroom from 9.15 -11.00. If you have some time you can share with us, we would love your help.

STEMShare

The NSW Department of Education has established a library of resources to support STEM/STEAM based learning in schools. This term the school has on loan a Robotics kit, to complement the resources we already own ourselves. Stage 3 students have been working to solve some road safety challenges, using 'Dash' robots. They have written scripts for 'Dash' to read and have coded instructions for the robot to use roads safely. This is a great example of collaborative learning.

Ben

Relieving Principal

2019 Planner

Term 1	Monday	Tuesday	Wednesday	Thursday	Friday
4	18 February. Dance Program K-6	19 February.	20 February. Parent Information Night	21 February.	22 February.
5	25 February. Dance Program K-6	26 February.	27 February.	28 February.	1 March.
6	4 March. Dance Program K-6	5 March.	6 March.	7 March.	8 March.
7	11 March. Dance Program K-6	12 March.	13 March.	14 March.	15 March.
8	18 March. Dance Program K-6	19 March. Final Date to Purchase P&C Fete Ride Pass Tickets	20 March. Final Stage 3 Camp Payment Due	21 March.	22 March. P&C Fete Tomorrow
9	25 March. Dance Program K-6	26 March.	27 March.	28 March.	29 March.
10	1 April. Dance Program K-6 Parent Teacher Interviews	2 April.	3 April. Stage 2 Excursion	4 April. Stage 2 Excursion	5 April. Stage 2 Excursion ➔
11	8 April. Dance Program K-6 Parent Teacher Interviews	9 April.	10 April.	11 April.	12 April. Last Day of Term 1 ➔

Would you like to volunteer at our School?

Volunteers help our student's in the classroom, in the canteen and with sporting events

Please see the ladies in the office, they will be able to help you complete a *Working with Children Declaration*.

- **Volunteers need to complete a *Working with Children Declaration*** – volunteer details must be updated every 12 months unless they hold a current Working with Children check provided by the Roads and Maritime Services, which is free for volunteers and valid for 5 years.
- **Volunteers must also provide 100 Points of Identification** – *the following items will provide 100 points of identification :*
 - Driver's Licence/Passport/Birth Certificate
 - Medicare Card
 - Bank Card
 - Credit Card **OR** Concession Card
 - Utility Notices

If you would like to volunteer to provide transport to students that are required to attend school activities away from school, you will need to provide the following before transporting students:

- Complete a *Working with Children Declaration* and provide 100 points of identification
- Current Driver's Licence
- Car Registration details

This is a requirement of the DoE for all volunteers working in schools. For more information, please see the ladies in the front office.

Please Note: *Before you are able to volunteer at Wollongbar Public School you **are required to** fill out a *Working with Children Declaration* and provide 100 points of Identification to our school.*

Volunteers must sign in and out and collect a badge at the front office each time they are on school grounds to volunteer in the classroom or canteen.

safe parking in school zones in ballina shire



your child is
worth the extra
time it takes



ballina.nsw.gov.au

safe parking in school zones

As a community we need to ensure that children have safe passage to and from school. To improve road safety around schools, we need your assistance to understand the parking restrictions around schools and teach our children to be safe around traffic.

Always supervise a child and hold their hand when crossing the road.

Schools are areas where there is a lot of interaction between cars and pedestrians; including children. Children are small, hard to see, behave unpredictably and are extremely vulnerable. Their lack of road experience means it is difficult for them to judge dangerous situations.

Boys are twice as likely to be involved in child pedestrian casualties as girls and children aged 10 to 14 years have the highest rate of child pedestrian casualties (Roads and Maritime Services). You need to take extra care when driving and parking in and around school zones, even when you think there are no children around.

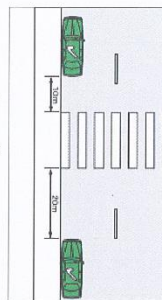
important road rules in school zones

PEDESTRIAN CROSSINGS

Fine exceeds \$439 and attracts a penalty of two demerit points.

What is the rule? You must not stop within 20 metres before a pedestrian crossing or 10 metres after a pedestrian crossing unless there is a control sign permitting parking.

Why? To ensure that pedestrians can have a clear view of approaching vehicles and drivers can see pedestrians who are about to cross the road.

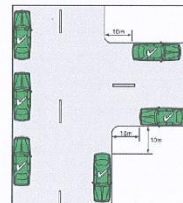


INTERSECTIONS

Fine exceeds \$439 and attracts a penalty of two demerit points.

What is the rule? You must not stop within 10 metres of an intersection.

Why? To ensure that there is a clear view of children crossing the road at the intersection.

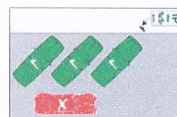
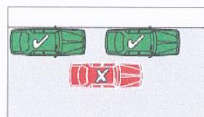


DOUBLE PARKING

Fine exceeds \$330 and attracts a penalty of two demerit points.

What is the rule? You may not stop on the road adjacent to another vehicle at any time even to drop off or pick up passengers.

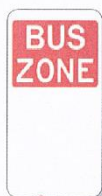
Why? Double parking forces other cars to go around you causing traffic congestion and reduces the view of drivers and children crossing the road.



important signs around schools

BUS ZONE

Fine exceeds \$330 and attracts a penalty of two demerit points.



What does it mean? You must not stop or park in a bus zone unless you are driving a bus.

Why? To provide a safe place for large buses to set down and pick up passengers. Cars parking in bus zones put lives at risk by forcing buses out of "their" safety zone.

NO STOPPING



Fine exceeds \$330 and attracts a penalty of two demerit points.

What does it mean? You cannot stop in this area for any reason.

Why is it there? To keep sight lines clear for drivers and children so both have more time to avoid accidents.

Stopping on a continuous YELLOW LINE will also attract a \$257 fine.

A driver must not stop at the side of a road marked with a continuous yellow edge line.

It means the same as the No Stopping sign.



no apologies, no excuses

When it comes to child safety, Ballina Shire Council makes no apologies for issuing infringement notices to drivers who break the law in and around school zones.

Illegal parking in school zones puts children at risk and endangers lives. Parking offences in school zones carry heavy fines and loss of demerit points.

NO PARKING

Fine exceeds \$183 and attracts a penalty of two demerit points.



What does it mean? You can stop in a NO PARKING zone for a maximum of two minutes to drop off and pick up passengers. The driver must stay within three metres of the vehicle at all times.

Why? To provide a safe place for older children to be set down and picked up without endangering other children.

NO STOPPING ON PATH/NATURE STRIP

Fine exceeds \$330 and attracts a penalty of two demerit points.

What does this mean? You cannot stop in this area for any reason.

Why? To keep sight lines clear for drivers and pedestrians.



picking up your children after school – have a plan

Plan with your child how you will collect them;

- When and where will you be after school?
- Where should your child wait?

Make sure they know not to try and get into your vehicle while it is still in traffic, even if you are stopped, they should wait until you have parked.

Your school may have some arrangements in place to help you collect your children.



If you experience a problem with illegal or dangerous parking at your school, contact

Ballina Shire Council

PO Box 450

Ballina NSW 2478

Phone 1300 864 444

Email council@ballina.nsw.gov.au



UPCOMING EVENTS

Who	Event	Payment Due Date	Cost
Years 3 & 4 - 2019	Excursion – Coffs Coast Adventure Centre	Tuesday 25th September Wednesday 24th October Wednesday 28th November Wednesday 13th February	\$180 / Student \$80 / Student \$70 / Student \$50 / Student
Years 5 & 6 - 2019	Excursion – Canberra & Sydney	Wednesday 17th October Wednesday 14th November Wednesday 12th December Wednesday 20th February Wednesday 20 th March	\$263 / Student \$150 / Student \$150 / Student \$100 / Student \$100 / Student
Year 5	Laptop Purchase for Year 5	Monday 11 th March	Option 1. \$397 / Student up front and and \$1 on graduating Yr 6 Option 2. Deposit of \$237 with term payments of \$40 (for 4 terms) and \$1 on graduating Yr 6
Year 6	Laptop Purchase for Year 6	Monday 11 th March	Option 1. \$397 / Student up front and and \$1 on graduating Yr 6 Option 2. Deposit of \$237 with term payments of \$80 (for 2 terms) and \$1 on graduating Yr 6
Whole School	Dance Program	Friday 1st February	\$20 / Yrs 1-6 Students \$18 / Kindergarten Student

Unfortunately, students who have not **paid and brought in a permission note by the due date** for these events will not be able to participate. Please visit the **school website** to make a payment online.



is available at our school from 8.30am-1.30pm

Permission Notes MUST be accompanied by payment or they will be returned to your child.

Have you changed any of your personal details lately?

Please complete the form below and return to the Office with all your updated information.

CHANGE OF DETAILS

Students Name: _____ Class: _____

Address: _____

Parent/Guardian 1 Home Phone: _____ Mobile: _____

Parent/Guardian 2 Home Phone: _____ Mobile: _____

Emergency Contact 1 Name and Phone Number: _____

Emergency Contact 2 Name and Phone Number: _____

Medical Details/Conditions: _____

Signature: _____ Date: _____

Wollongbar P&C

Saturday 23rd March, 2019

9am – 2pm

A Fair to Remember

will be here before you know it!

Pre-paid ride passes available for \$30 (\$35 on the day)
from the School Office using the below form or online

<https://tinyurl.com/wollPC/fete>.



Things to do before the fete:

- ☐ Bring in gently used clothing and books for the P&C Stall
- ☐ Fill tombola jars and bring to school
- ☐ Create beautiful baskets and bring to school
- ☐ Book a stall (if you would like to be a stall holder)
- ☐ Let the P&C know when you can volunteer
- ☐ Buy Fete ride passes



Functional artwork

Our students had a lot of fun last night decorating these beautiful plant pots that we will be selling on the day of the fete! Make check out the P&C Stall early to purchase your child's pot.

Want a stall at the Fete?

Businesses can book a fete stall for \$30. Spots are limited.

Contact Anna 0410 594 676 to reserve your stall.



WE NEED YOUR HELP!

Can you help at the Fete?

Please contact Anna if you are able to help out on the day of the fete.

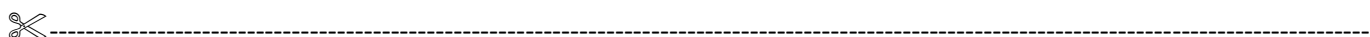


Don't leave your tickets to the last minute! Get your cheap tickets NOW!!

Purchase your ride pass for **\$30** and save **\$5**. (Passes are **\$35** on the day). An All-Day ride pass will provide unlimited entry to:

- **The Rock Wall**
- **Cars Jumping Castle**
- **Extreme Retro Obstacle Course**
- **Teacups Ride**
- **Surf's Up Waterslide (Bring a towel and a change of clothes as you will get wet!)**
- **Mechanical Bull**
- **Laser skirmish**

To purchase your ride passes, please complete the attached form below and return to the office in a clearly marked envelope with the correct change. Many thanks and see you at the Fair, March 23rd. Tickets will be on sale until 19th March 2019. [Please allow 3-5 days for receipt of ride ticket purchase.](#)



A Fair to Remember Ride Pass

Child's name _____ Age _____ Class _____

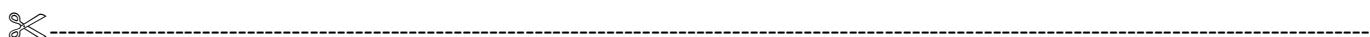
Contact name and number _____ email (optional) _____

Number of ride passes (\$30 each) _____

Amount enclosed \$ _____



Waiver: In consideration of your acceptance of this entry, I hereby for myself, my executors and administrators waive any and all rights and claims for damages I may have against Wollongbar P&C, its respective representatives and successors and all sponsors, and will hold them harmless from any injury suffered in this event. Also, none of the above is responsible for the loss of neither personal items nor any other form of aggravation in connection with this event. I have been warned that all ride pass holders must be in good health to participate in the event. Selecting the adjacent checkbox indicates that you have read and agree to the full waiver located here: <https://sites.google.com/view/wollongbarpcfundraising/fete/waiver>



P&C Calendar

<i>What's happening?</i>	<i>When?</i>	<i>Where?</i>
Fundraising Meeting	6 th March 2019 @ 6pm	Tavern
P&C General Meeting	6 th March 2019 @ 7pm	Staff Room
A Fair To Remember	23 rd March	WPS



You can reach the P&C team via wollongbarPC@hotmail.com, <https://www.facebook.com/wollongbarPC> or Anna (President) on 0410.594.676



YOUR COMPUTER WIZZARD

Suite 2, 88a Main Street, ALSTONVILLE, NSW • 02 6628 0099 • info@ycw.com.au
ABN 57 627 736 441



Repair • Reuse • Recycle • Reduce • Replace

Reduce ewaste & landfill • Refurbished, new & customised systems • Onsite visits
Speed up your system with an upgrade • Virus/Malware cleanup • Remote fixes
Hardware repairs • Mobile phone issues • Personalised set up • Latest updates



SCU

Robotics Club



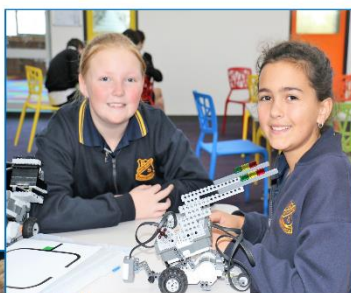
Southern Cross University
School of Environment,
Science and Engineering

A self-directed learning environment to foster initiative, interest and skills in Robotics

For Primary and High School GIRLS & BOYS !

Every Wednesday
during school terms
3.30pm ~ 5.30pm

A Block, Level 2
Room A2.41
Southern Cross University
Lismore Campus



\$55 30th Jan to 3 July
(School Terms 1 and 2)

\$55 24 July to 18 December
(School Terms 3 and 4)



All Robotic platforms welcome.



For enquiries, please email: robotics@scu.edu.au

www.scu.edu.au/engineering



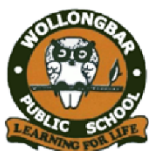
Excellence in music education

Imagination • Enjoyment • Skill

Piano Drums Guitar

University-trained and experienced local teachers
Fun and engaging lessons held in a fully equipped
studio in Alstonville
Music education is vital to your child's development so
what are you waiting for?
Call NOW as places are limited

web: tipitinamusic.com.au
email: tipitinamusic@gmail.com
phone: 0425241049



Wollongbar Public School

P.O Box 3455 Wollongbar NSW 2477
Phone (02) 6628 1302 Fax (02) 6628 1976
Email: Wollongbar-p.school@det.nsw.edu.au
Principal: Jennifer Thomas



Wollongbar Public School Visitor and Volunteer Procedures

Volunteers are a vital part of our school, adding their talents and skills to our children's learning environment. Our school culture is enriched and the value of education reinforced by our volunteers' participation in the broader school community. The aim of this procedure is to establish a common understanding of the responsibilities and standards of behaviour expected of all visitors and volunteers at Wollongbar Public School.

The conduct and manners of visitors and volunteers should at all times be acceptable and an appropriate model for students. The **School Community Charter** outlines the responsibilities of parents, carers, educators and school staff to ensure our learning environments are collaborative, supportive and cohesive.

The same Code of Conduct binds volunteers as NSW Department of Education employees. This includes adhering to the values that underpin our work. These values include **fairness, respect, integrity and responsibility**. We demonstrate these values by being:

- consistently honest, trustworthy and accountable
- being courteous when dealing with others
- being committed to social justice by opposing prejudice, injustice and dishonesty
- avoiding discrimination, for example on grounds such as gender, race, religion and culture
- and promoting dignity and respect by avoiding behaviour which is, or might reasonably be perceived as, harassing, bullying or intimidating.

Parents, Carers and other volunteers assisting with activities do so on the understanding that:

- The teacher(s) is/are in a position of authority and are therefore responsible for the programs operating within the classroom and/or school and on excursions.
- The teacher(s) in charge has ultimate responsibility for the safety, welfare and care of the students.
- Volunteers accept joint responsibility, within the framework of *NSW Department of Education* guidelines and procedures, for children under their care for the duration of the time at school, on excursions or travelling to/from a school sanctioned event.
- Where volunteers drive students to/from an event, the students remain primarily under the duty of care of the teacher, with the volunteer accepting joint responsibility. Travel should be directly to the venue from school and directly back to school at the end of the event.
- Volunteers are to refrain from smoking in the presence or sight of students – the school is a government non-smoking area.
- Volunteers should not consume or have consumed alcohol prior to working with children.
- Volunteers are to co-operate with teachers in charge to ensure safety and welfare of students and compliance with *NSW Department of Education* guidelines and procedures.
- Volunteers must sign themselves in and out in the attendance folder at Wollongbar Public School's front office when participating in school activities.
- Volunteers should wear the Wollongbar Public School's volunteer badge as identification whilst assisting with students.
- Under the Child Protection Act of 1997 it may be necessary for the school to have volunteers who assist students undergo a Criminal Record check.



Wollongbar Public School

P.O Box 3455 Wollongbar NSW 2477
Phone (02) 6628 1302 Fax (02) 6628 1976
Email: Wollongbar-p.school@det.nsw.edu.au
Principal: Jennifer Thomas



Education
Public Schools

Confidentiality is of prime concern. Parents, carers, volunteers and visitors are not to discuss any information they obtain at school with anybody other than the classroom teacher or the Principal.

The Principal may exclude from any or all Wollongbar Public School volunteer programs and events any parent, carer, volunteer worker or visitor who fails to fulfil the above requirements.

Before assisting in day-to-day activities at Wollongbar Public School, parents, carers and close relatives who volunteer must first complete and provide to the Office:

Appendix 5 – Declaration for volunteers and non-child related contractors. This includes providing 100 points of ID. *Appendix 5* must be completed by any volunteers who are exempt under the **Child Protection (Working with Children) Regulation 2013** from having to hold a **Working With Children Check**.

A copy of **Appendix 5** is available from the Office and our website.

Jennifer Thomas
Principal