



# Wollongbar Public School

Simpson Ave, Wollongbar 2477

Ph: 6628 1302 Fax: 6628 1976

Email: [wollongbar-p.school@det.nsw.edu.au](mailto:wollongbar-p.school@det.nsw.edu.au)

Website: <https://wollongbar-p.schools.nsw.gov.au/>

Principal: Jennifer Thomas

Thursday 13<sup>th</sup> December 2018

Term 4, Week 9

Volume 39



Education  
Public Schools

## Calendar

### Week 9

14/12 Presentation Day  
10.00am

14/12 Year 6 Farewell –  
House With No  
Steps  
5.00pm

### Week 10

18/12 Picnic Day

19/12 Last Day of Term 4

19/12 Year 6 Tunnel  
3.00pm

### 2019 – Term 1

#### Week 1

30/01 Year 1 – 6 Students  
Commence Term 1

31/01 Swimming Carnival  
Payments Due

01/02 Swimming Carnival  
Students 8 Yrs &  
Older in 2019 Only

#### Week 2

04/02 Dance Program  
Begins

05/02 Kindergarten  
Commence Term 1

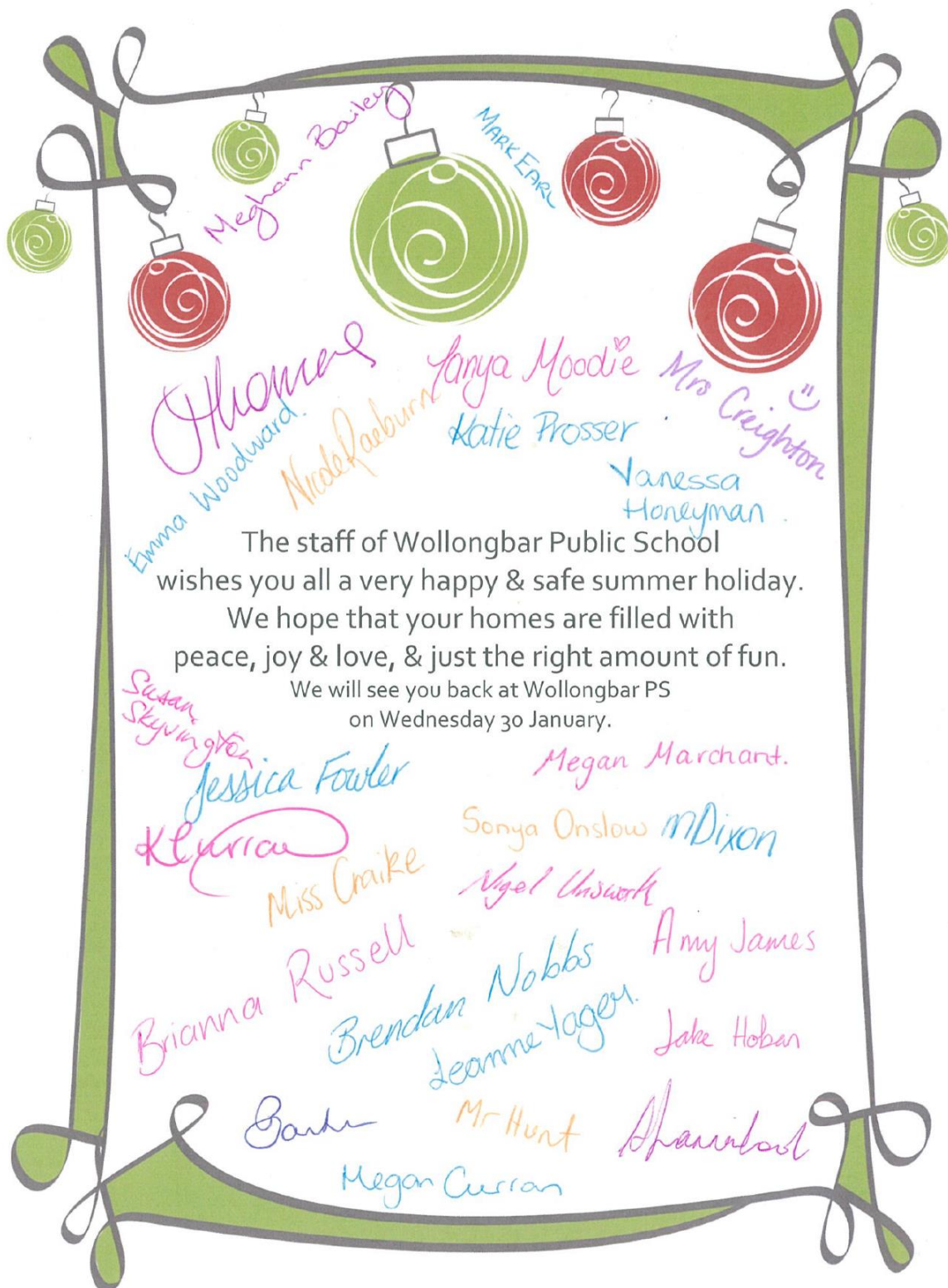
08/02 Assembly – TBA  
11.30am

#### Week 3

13/02 Final Payment for  
Stage 2 Camp Due

15/02 Assembly – TBA  
11.30am

## Principal's Report



For more events on our  
Calendar, please go to:  
<http://www.wollongbar-p.schools.nsw.edu.au/>

# Share Our Space

Our school is a vital part of our community, and we want you to use it. During these upcoming holidays, we are one of more than 230 schools across NSW who will be opening up play areas for your enjoyment.

The gates will be open between 22 December and 25 January 2019 between 8am and 6pm. A security guard will be in place to monitor safety and security, and gates will be locked at closing time each evening. **Please note that parents and carers are responsible for the supervision of their children at all times. No supervision is provided.**

As always, if you need to report a security issue at the school, you can call security 24 hours on 1300 880 021. For more information on this program, please visit [schoolinfrastructure.nsw.gov.au](http://schoolinfrastructure.nsw.gov.au) or contact the NSW Department of Education on 1300 482 651. This program is an initiative of the NSW Government.

## Presentation Day 2018

Parents and Carers, family and friends are warmly invited to attend our annual Presentation Day Ceremony tomorrow **Friday 14 December at 10am** in the School Hall. You are also most welcome to join us for Morning Tea in the Library afterwards.

**School Community Charter:** Collaborative. Respectful. Communication.

Included with this newsletter is a copy of the new **NSW Department of Education School Community Charter**. The Charter outlines the responsibilities of parents, carers, educators and school staff in NSW public schools to ensure our learning environments are collaborative, supportive, and cohesive.

We hope that you have an enjoyable break, and take advantage of the opportunity to use the play areas in our school.

**News:** Each Monday, starting Week 2 and continuing for all of Term One, students will be taking part in dance lessons delivered by specialist teachers, culminating in a whole school performance at the end of Term One. A note with more information will be sent home before the end of the year.

**Don't forget that our Swimming Carnival is the first Friday back-** Friday 1 February- at Alstonville Pool.

We hope that you have an enjoyable break, and take advantage of the opportunity to use the play areas in our school. Year 1 to Year 6 students return to school in 2019 on Wednesday 30 January. Kindergarten begins school on Tuesday 5 February.




Jennifer Thomas

Principal



## 2018 Planner

Term 4	Monday	Tuesday	Wednesday	Thursday	Friday
9	10 December.	11 December. School Concert Matinee and Night Performance	12 December. School Concert Night Performance	13 December.	14 December. Presentation Day Year 6 Farewell
10	17 December.	18 December. Picnic Day	19 December. Year 6 Tunnel Last Day of School	20 December.	21 December.
2019 – Term 1					
1	28 January. Australia Day Public Holiday	29 January. Staff Development Day	30 January. Student Commence Term 1 Kindergarten Best Start Testing Begins	31 January. Swimming Carnival Payments Due	1 February. School Swimming Carnival
2	4 February.	5 February. Kindergarten Commence Term 1	6 February.	7 February.	8 February.

UPCOMING EVENTS			
Who	Event	Payment Due Date	Cost
Whole School	School Contributions & Technology Levy	Now	\$87 / Student \$117 / 2 Students \$147 / 3 Students \$147 Plus \$20 Per Student / 4 or More Students
Years 3 & 4 - 2019	Excursion – Coffs Coast Adventure Centre	<del>Tuesday 25<sup>th</sup> September</del> <del>Wednesday 24<sup>th</sup> October</del> <del>Wednesday 28<sup>th</sup> November</del> Wednesday 13 <sup>th</sup> February	<del>\$180 / Student</del> <del>\$80 / Student</del> <del>\$70 / Student</del> \$50 / Student
Years 5 & 6 - 2019	Excursion – Canberra & Sydney	<del>Wednesday 17<sup>th</sup> October</del> <del>Wednesday 14<sup>th</sup> November</del> <del>Wednesday 12<sup>th</sup> December</del> Wednesday 20 <sup>th</sup> February Wednesday 20 <sup>th</sup> March	<del>\$263 / Student</del> <del>\$150 / Student</del> <del>\$150 / Student</del> \$100 / Student \$100 / Student
Year 4	Laptop Purchase for Year 5 2019	Wednesday 28 <sup>th</sup> November 2018	Option 1. \$452.10 / Student up front and and \$1 on graduating Yr 6 Option 2. Deposit of \$252.10 with term payments of \$40 (for 5 terms) and \$1 on graduating Yr 6
Students 8 Years & Over in 2019	Swimming Carnival	Thursday 31 <sup>st</sup> January 2019	\$2.50 / Student (if student has a pool pass) \$7 / Student (if student does not have a pool pass)
<p>Unfortunately, students who have not paid and brought in a permission note by the due date for these events will not be able to participate. Please visit the school website to make a payment online.</p> <p>   is available at our school from 8.30am-1.30pm</p> <p>Permission Notes MUST be accompanied by payment or they will be returned to your child.</p>			

## Annual School Swimming Carnival 2019

Our Annual School Swimming Carnival will be held on Friday 1<sup>st</sup> February 2019. Please be aware that students turning 8 years or older during 2019 will compete at our school carnival.

Permission notes regarding the carnival were distributed on Thursday 29<sup>th</sup> November 2018. Additional copies are available from the front office.

**Permission notes and payment is due to the Front Office by Thursday 31<sup>st</sup> January 2019.**

Many thanks,  
Brendan  
Swimming Coordinator



### School Communication

**The School App:** Have you downloaded our new school app, Skoolbag on your phone? It is available for free via the App store or Play Store. The Skoolbag App is used to send instant notifications to parent's phones about upcoming events or cancellations, and also contains other school information.



# Wollongbar P&C

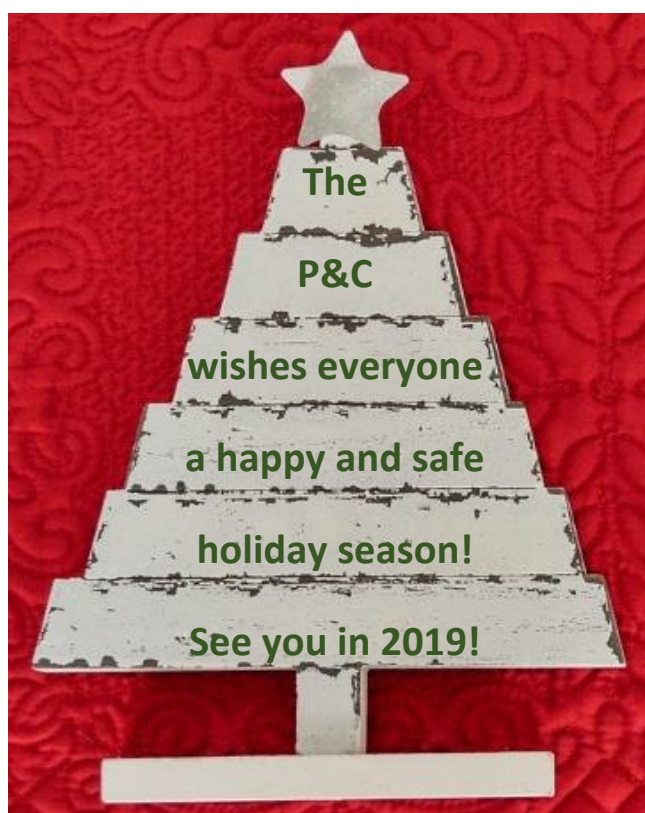
LAST DAY TO ENTER to win a ride pass to the fete –  
entries due tomorrow

Our colouring contest is on again to design our posters for A Fair to Remember!

Draw and colour on the below poster template for your chance to win a ride pass at the fete! All decorated posters must be returned to the school by Friday 14<sup>th</sup> December and the winners will be announced the last week of school. The contest is open to all Wollongbar students, including those attending kindy orientation.

Winners will be selected from each stage to receive a free ride pass for the fete. See the poster template on the next page or download it here: <https://tinyurl.com/WollPC/fete>

You can also scan and email your poster to [wollongbarPC@hotmail.com](mailto:wollongbarPC@hotmail.com).



## We love our volunteers



The P&C would like to thank all our volunteers for their generous donation of time and skills.

Every week the P&C recognises, and thanks, one of our volunteers for their generous donation of time and skills.

Do you know someone who helps and deserves recognition? Please put their name in the "Thank You" box in the office. Moreover, remember to put your own name in the box each time you volunteer!

Once a month all names go into the draw to win a Coffee Voucher from ESP Alstonville.



Many thanks to our  
local supporter

**E.S.P espresso bar**



# P&C Calendar

Feel free to join us, the first Wednesday of every month, for our P&C meetings.

What's happening?	When?	Where?
Fundraising Meeting	6 <sup>th</sup> February 2019 @ 6pm	Tavern
P&C General Meeting	6 <sup>th</sup> February 2019 @ 7pm	Staff Room



You can reach the P&C team via [wollongbarPC@hotmail.com](mailto:wollongbarPC@hotmail.com),  
<https://www.facebook.com/wollongbarPC> or Anna (President) on 0410.594.676



**DJm**  
Diamond Jewellery  
Manufacturers Est. 1981

DESIGN. MANUFACTURE. REPAIR.

**ANDREW COLLINS**  
02 6624 2591 . 0404 877 340  
75 Main Street, Alstonville NSW 2477



Many tracks, one road, sustaining community.  
Northern Rivers Community Gateway

**Christmas WITH Vacation Care**

Rainbow Region Kids Vacation Care is now taking bookings for the Christmas 2018/January 2019 school holidays in Casino, Kyogle, Wollongbar, Lismore and Ocean Shores!

For enquiries and to enroll, call us on 02 6621 7397 and 0447 211 835 or email us at [rrkassist@nrcg.org.au](mailto:rrkassist@nrcg.org.au)

[f](https://www.facebook.com/nrcg.org.au) [t](https://www.twitter.com/nrcg.org.au) [i](https://www.instagram.com/nrcg.org.au) [nrcg.org.au](http://nrcg.org.au)

**Adult Dance Fitness & Wellness @The Dance Warehouse**

Ballet \* Fitness \* Yoga \* Pilates \* Dance Therapy \* ALL ages  
Beginners welcome  
Ballet for Every Body  
It's never too late

Palm Shopping Centre Wollongbar

**Tel : 0411 306 430**  
[www.balletcoaching.com](http://www.balletcoaching.com)

Monique Feain  
BALLET COACHING.com



**YCW**  
YOUR COMPUTER WIZZARD

Suite 2, 88a Main Street, ALSTONVILLE, NSW • 02 6628 0099 • [info@ycw.com.au](mailto:info@ycw.com.au)  
ABN 57 627 736 441

Repair • Reuse • Recycle • Reduce • Replace

Reduce ewaste & landfill • Refurbished, new & customised systems • Onsite visits  
Speed up your system with an upgrade • Virus/Malware cleanup • Remote fixes  
Hardware repairs • Mobile phone issues • Personalised set up • Latest updates

**Wollongbar Christmas Carols**

**Saturday 15th December 2018**  
Wollongbar Public School, Simpson Avenue  
4:30pm Family Fun & Free Sausage Sizzle  
Face Painting, Christmas Craft, Games  
6:30-7:30 Christmas Carols

Free Event!

Event run by Crossroads Presbyterian Church, [crpc.org.au](http://crpc.org.au)  
For info contact Brad Fletcher on 6628 7585 or [findbradfletcher@gmail.com](mailto:findbradfletcher@gmail.com)  
Join us on Christmas Day at Wollongbar Public School - 9:30am

# A Fair To Remember

## Wollongbar P&C FETE

**Saturday 23<sup>rd</sup> March, 2019**

**9am – 2pm**



### POSTER COMPETITION!!!

Draw a picture of 'A Fair to Remember' in the box above, then colour the poster and return to the school by Friday 11<sup>th</sup> December for your chance to win a ride pass at the fete!

Name: \_\_\_\_\_ Class: \_\_\_\_\_



**Pre-paid ride passes available in early 2019**  
**\$30 (\$35 on the day)**

Pre-schooler pass (ride-limited) and individual ride tickets will also be available on the day



# School Community Charter



**Collaborative. Respectful. Communication.**

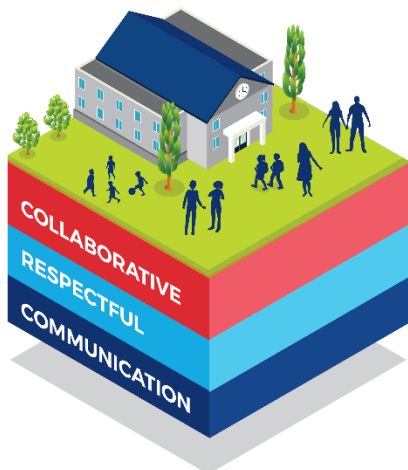
The following School Community Charter outlines the responsibilities of parents, carers, educators and school staff in NSW public schools to ensure our learning environments are collaborative, supportive and cohesive.

## What our schools provide

NSW public schools work to create positive environments for students, staff and the entire school community that support student learning. We strive to ensure that every student is known, valued and cared for.

**The best education happens when parents and schools work together.**

The School Community Charter aligns with the NSW Department of Education Strategic Plan 2018 – 2022.



## Positive environments

It is important that our NSW public schools are positive environments and that parents and carers are kept informed of students' progress and school announcements.

Parents and carers can expect:

- To be welcomed into our schools to work in partnership to promote student learning.
- Communication from school staff will be timely, polite and informative.
- Professional relationships with school staff are based on transparency, honesty and mutual respect.
- To be treated fairly. Tolerance and understanding are promoted as we respect diversity.

We treat each other with **respect**

We **prioritise the wellbeing** of all students and staff

**Unsafe behaviour** is not acceptable in our schools

We work **together** with the school

**Ensuring respectful learning environments for all members of NSW Public Schools communities.**



We create  
**collaborative**  
learning  
environments

We  
all play  
**our part**

We work  
**in partnership**  
to promote  
student  
learning

## Communicating with our schools

Our staff will find a time to talk to you when they can give you their full attention. Please remember that while our staff are in class or dealing with other matters, they may not be available to answer your questions immediately.

Our schools and communities will make sure that written communication is appropriate, fair and easy to read. We encourage you to use email and social media appropriately to connect with your school and stay up-to-date with up-coming events in the school community.

Our guide for parents, carers and students provides useful information about the complaints process:

[education.nsw.gov.au/about-us/rights-and-accountability/complaints-compliments-and-suggestions/guide-for-parents-carers-and-students](https://education.nsw.gov.au/about-us/rights-and-accountability/complaints-compliments-and-suggestions/guide-for-parents-carers-and-students)

## Respectful communication is a right

In all workplaces people have the right to feel respected. Unacceptable and offensive behaviour has no place in our school communities.

To ensure the wellbeing of students, staff and the community in our schools, steps will be taken to address unacceptable behaviour. This may include restricting contact with the school community or, in more serious cases, referral to NSW Police.



### Unacceptable behaviour may include but is not limited to:

- Aggressive or intimidating actions, such as violence, threatening gestures or physical proximity.
- Aggressive or intimidating language, including the use of obscenities, making sexist, racist or derogatory comments or using a rude tone.
- Treating members of the school community differently due to aspects such as their religion or disability.
- Inappropriate and time wasting communication.



**Collaborative.**  
**Respectful.**  
**Communication.**

**School Community Charter**

[education.nsw.gov.au](https://education.nsw.gov.au)