

ROAD SAFETY AROUND WOLLONGBAR PUBLIC SCHOOL

Ballina Council would like to ensure that no child is injured or killed whilst travelling to and from school

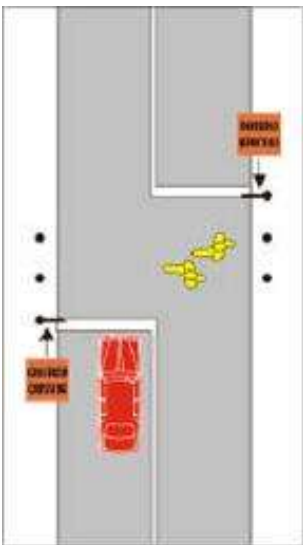
School zones are areas where there is a lot of interaction between vehicles and pedestrians. Children are small and often difficult to see; they can behave unpredictably and are considered to be vulnerable road users. Their age and lack of experience means it is difficult for them to judge dangerous situations.

To improve road safety around your school, **we need your assistance.**

Familiarise yourself with the road crossing rules around your school and teach your child(ren) to be safe around traffic. Drivers are reminded to be aware of the children's crossing, and to comply with the road rules concerning children's crossings. School zones operate between 8am to 9.30am and 2.30 to 4.00pm on school days. Remember the speed limit is 40km per hour in all school zones.

Around Wollongbar Public School: Pedestrians, students, parents and carers

- **Park and walk.** Allow yourself plenty of time to safely drop off and pick up your child.
- **Kids Need a Hand in Traffic.** Primary school children need to be actively supervised at all times in and around traffic to make them safer.
- **Discuss road safety with your child.** As you are driving and walking, talk with your children about road safety, what you are looking and listening for. Explain to your child where and when it is safe to cross and why. Children need lots of supervised opportunities to learn how to keep safe on the roads before they can do it themselves.
- **Remind your child** about the importance of pedestrian and bicycle safety, travelling safely on skateboards and safety in car parks.



Around Wollongbar Public School: Drivers

- **There is a children's crossing on Simpson's Avenue.**
- **The crossing is indicated** by white stop lines marked on the road and by children's crossing flags that must be displayed by the school during school zone times.
- **A driver approaching the children's crossing** must drive at a speed at which they can stop safely before the crossing.
- **A driver must stop** at the children's crossing before reaching the stop line if a pedestrian is on or entering the crossing.
- **A stopped driver must not proceed** until there is no pedestrian on or entering the crossing.
- **Penalties apply to driver's who do not comply with road rules around children's crossings.**

no apologies, no excuses

When it comes to child safety, Ballina Shire Council makes no apologies for issuing infringement notices to drivers who break the law in and around school zones.

Ballina Council Rangers will be monitoring in your school zone. Please do the right thing, and drive and walk safely in school zones. For more information, please contact Helen Carpenter, Road Safety Officer, Ballina Shire Council Phone: 6686 1427